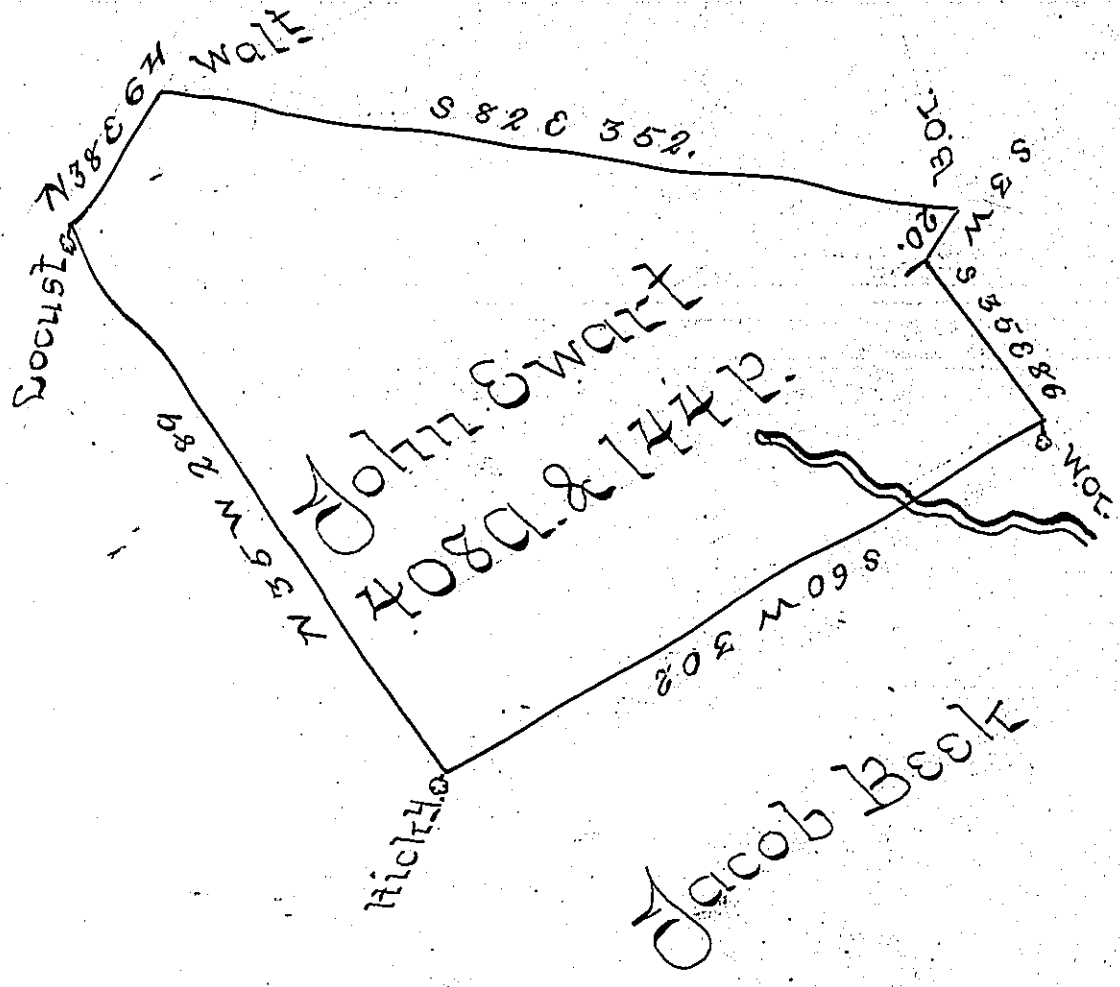


John Wilson



Draught of a Tract of Land situate on or near Small Stream of Water running into Clear Field Creek in the County of Bedford Contain^g four hundred and eight Acres & One hundred and forty four perches & the usual Allow^{ce} of six p^{ct} Cent for Roads &c^a. Surveyed for John Ewart June 30 1785. In pursuance of a Warrant dated July 1st 1784

George Woods D.S.

To John Lukens Esq^r S.G.

IN TESTIMONY that the above is a copy of the original remaining on file in the Department of Internal Affairs of Pennsylvania, made conformably to an Act of Assembly approved the 16th day of February, 1833, I have hereunto set my Hand and caused the Seal of said Department to be affixed at Harrisburg, this fifth day of August 1902.

Jameson Little
 Secretary of Internal Affairs.